

Services | SenseHUB®

Pre Launch Information



BUSS SenseHUB®. Condition Monitoring Services.

For maximum maintenance effectiveness and machine uptime.

The value of your BUSS compounding equipment becomes particularly apparent in the event of unexpected downtime. A quick service reaction in combination with the availability of long-lead spare parts are crucial in such scenarios.

The BUSS SenseHUB® platform lowers the risk of unwanted production outage, by continuously monitoring the condition of the machine. Various sensors (e.g., oil condition and vibrational analyses) provide deeper understanding of the machine health. In the event of an anomaly, the BUSS service team is at your disposal to provide the best possible support for safe and continuous operation.

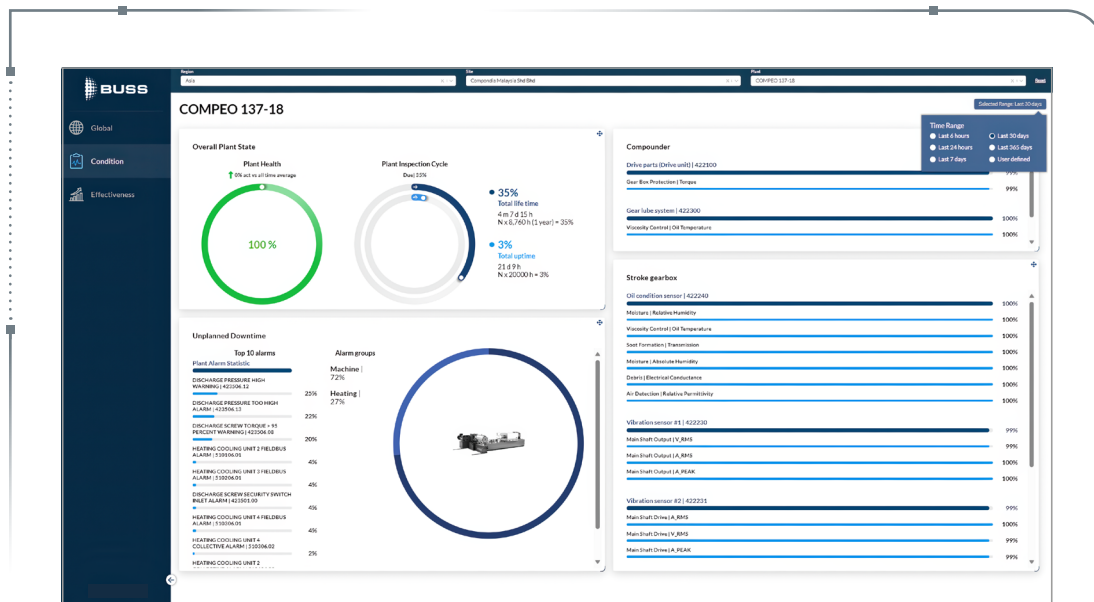
SenseHUB® Benefits

- ✓ Continuous condition monitoring
- ✓ Faster service reaction via data-based interventions
- ✓ Reduced planned maintenance services
- ✓ Increased equipment uptime
- ✓ Increased equipment lifetime
- ✓ Maximum maintenance efficiency

BUSS Made Solution

- Tailored via machine learning
- Available for all BUSS kneaders
- Increasing range of sensors
- Opening doors for future digital BUSS services
- Perfectly compatible with other BUSS service products

Maintenance	Reactive	Preventive	Predictive
When	At Failure	Periodically	When necessary
Breakdown	Maximum	Moderate	Minimized
Condition	None	Planned Intervention	Condition Monitoring
SenseHUB®			



SenseHUB® Profile

- ✓ Customer IOT Dashboard for all your kneaders
- ✓ Added gear box Vibration & Oil quality sensors
- ✓ Kneader condition – sensor & trend data
- ✓ Kneader effectiveness
 - Lifetime
 - Specific energy consumption
 - Uptime, downtime, production time
 - Service KPIs and others

BUSS Service Link

- ✓ Installation & support at first hand
- ✓ BUSS Products & Services in one stop



Ask Us!

www.busscorp.com/contact

Buss AG
Hohenrainstrasse 10
4133 Pratteln
Switzerland
P +41 61 825 66 00

F +41 61 825 68 58
info@busscorp.com
www.busscorp.com



BUSS

excellence in compounding