

Discover our CPS-F Pelletizer

Precision. Flexibility. Performance.

BUSS Pelletizing System CPS-F

BUSS' pelletizing technology **perfectly meets the needs** of cable and performance compounds as well as viscous and porous applications. It combines precision cutting with intelligent flow design, ensuring highly consistent **pellet quality** and **reliable processing**.

Developed to fulfill economic, technical and safety standards, the CPS-F stands out with a compact and modular layout, intuitive handling, and easy integration into new or existing compounding lines. Available in various sizes, CPS-F systems cover a wide throughput range from 80 to 3,500 kg/h, making them a perfect match for both high-performance production and flexible compounders.

General features & customer benefits

- ✓ **Exchangeable die plates with specially designed shapes** compensate for material deformation, delivering optimal pellet cutting quality
- ✓ **Material flow paths** kept as **short** as possible to avoid dead zones
- ✓ **Rear-mounted drive: no need to disconnect drivetrain** for maintenance
- ✓ **Optional integration of screen changer**
- ✓ **Rotor brake & manual override button** for additional operator safety
- ✓ **Compact & modular housing** – Easily accessible, cleanable, maintainable
- ✓ **High-quality steels & resistant materials**

Stand-alone features

- ✓ Fulfillment of the required **adjustability and mobility**
- ✓ Effectively designed **interfaces** (prepared as stand-alone solution)

Features regarding advantages over UWP (underwater pelletizing)

- ✓ Approx. **50 % lower pressure drop** (vs. UWP) > less energy input
- ✓ **Much faster and cleaner access** to cutting zone
- ✓ **Lower purchase price** (than UWP - with the same task)
- ✓ **Easier and faster commissioning (FAT)** and after-sales service (due to BUSS product)
- ✓ Consequently, **TCO is 20-25% lower** compared to UWP



BUSS

excellence in compounding

Pelletizing system CPS-F

Technical data CPS-F 200

Output rates	600 – 1,700 kg/h
Die plate diameter	200 mm
Number of holes	up to 800
Hole diameter	up to 3.0 mm
AC drive power	5.5 kW

Material grades

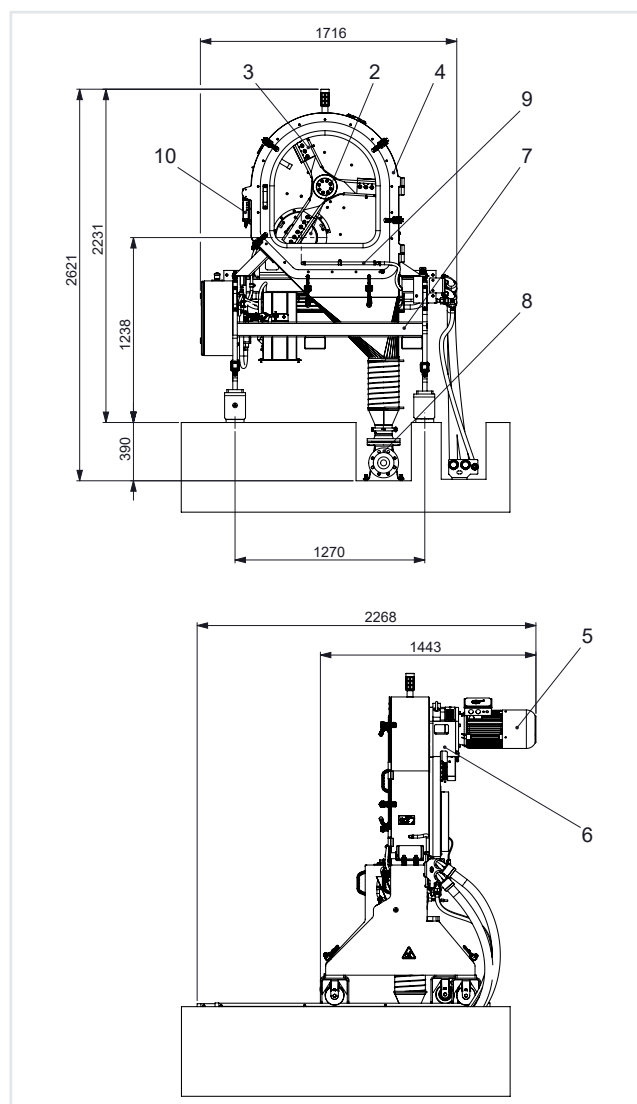
Die plate	Tempered and plated steel
Knife blades	Hardened chrome steel

Heating

Temperature range	up to 300 °C
Heating blament	Heating cartridges
Heating power	4,9 kW
(This unit is not shown in the illustration.)	

Components

1 Screen changer (if part of the pelletizing system)
2 Die plate
3 Knife arm
4 Pelletizing housing
5 Drive
6 Support
7 Base frame
8 Transport of pellets
9 Water lines
10 Protective installation



Overview CPS-Types

	COMPEO 55	COMPEO 88	COMPEO 110	COMPEO 137
Pelletizing System to CSS-C (to discharge, cascade)	CPS-C 110	CPS-C 200	CPS-C 250	CPS-C 300
Pelletizing System to CSS-F (to discharge, flanged)	CPS-F 110 available in 2026	CPS-F 160 available in 2026	CPS-F 200	CPS-F 250 available in 2026